

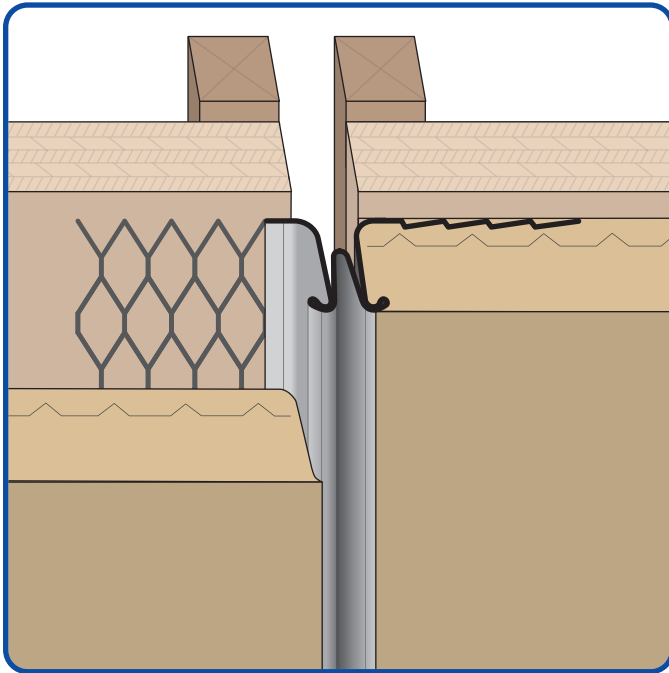


PHONE: (909) 993-5700
EMAIL: sales@deluxebuildingproducts.com
LOCATION: 1350 E. Lexington Ave., Pomona, CA 91766



www.DeluxeBuildingProducts.com

Deluxe #XJ-15 Double J Control Joint



✓ Available in Galvanized Steel

Deluxe #XJ-15 Double J Control Joint relieves stresses and strains in large plaster walls and ceilings. This product has expanded flanges for proper keying and the unique design permits the plaster to key underneath the rolled edges for added adhesion while the walls expand and contract under typical conditions. The pull tape on the joint itself provides a clean finish when removed after the finish coat.

AVAILABLE DIMENSIONS

X Sizes: 1/2", 3/4" or 7/8"

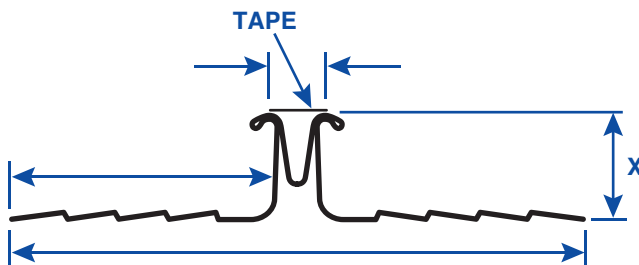
Length: 120"

Available Materials:

Galvanized Steel

ASTM Codes:

All Accessories are fabricated from prime galvanized steel G60 (G90 upon request) zinc coating by the hot dipped method, conforming to steel and coating specification ASTM A-653/A-653M or zinc alloy meeting ASTM B-69.



GET A QUOTE

Company: _____
Name: _____
Address: _____
City: _____
State: _____
ZIP: _____
Phone: _____
Email: _____

Quantity: _____
Material: _____
X Size: _____
Length: _____

Notes: _____



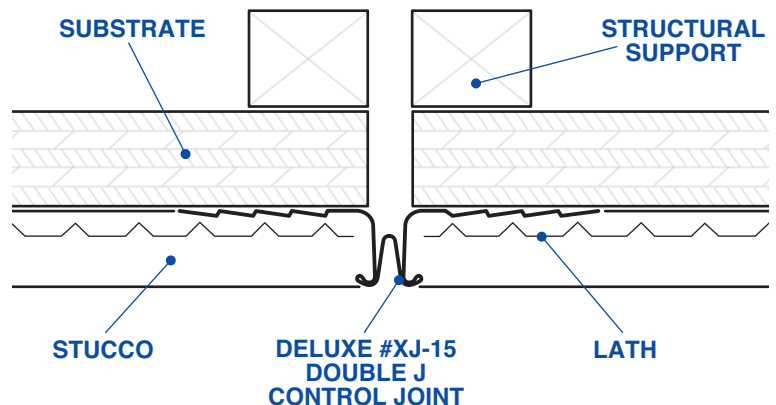
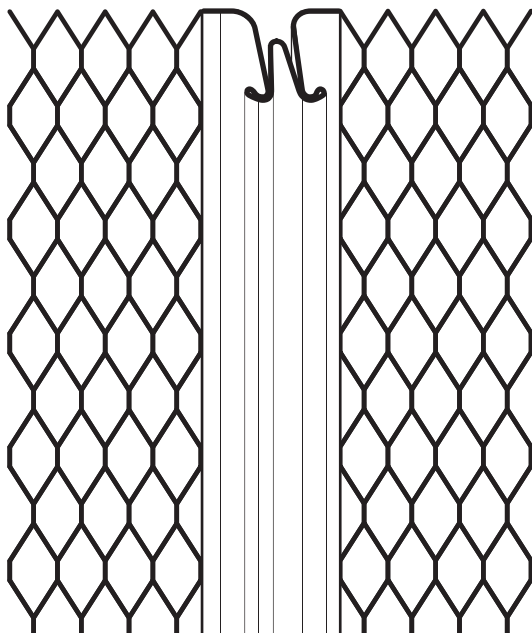
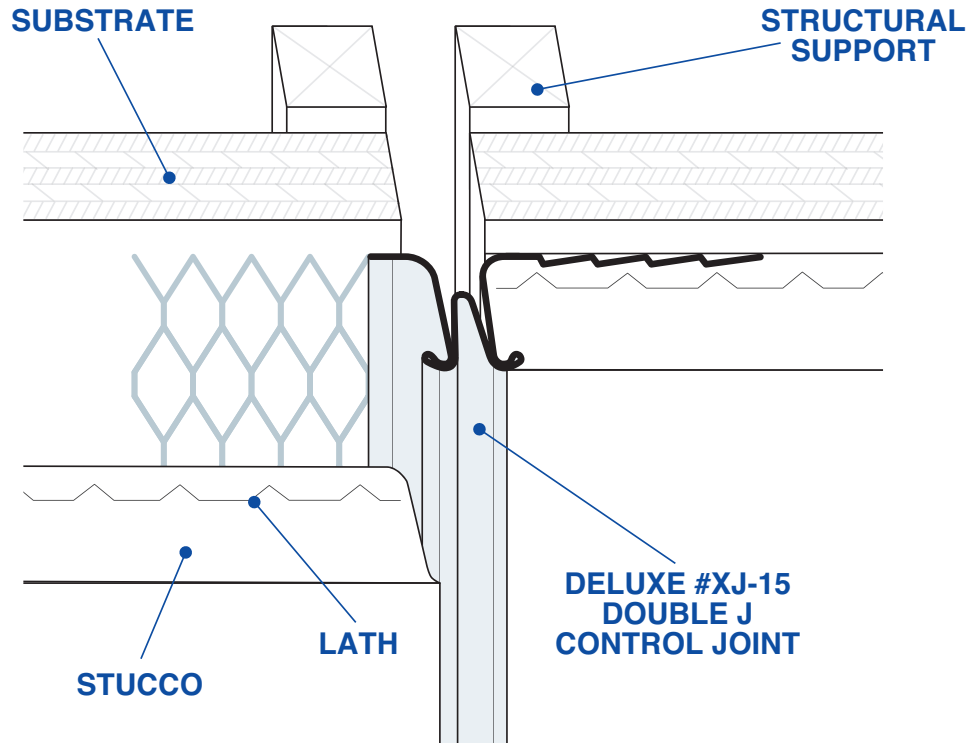
PHONE: (909) 993-5700
EMAIL: sales@deluxebuildingproducts.com
LOCATION: 1350 E. Lexington Ave., Pomona, CA 91766



www.DeluxeBuildingProducts.com

Deluxe #XJ-15 Double J Control Joint

Deluxe #XJ-15 Double J Control Joint relieves stresses and strains in large plaster walls and ceilings. This product has expanded flanges for proper keying and the unique design permits the plaster to key underneath the rolled edges for added adhesion while the walls expand and contract under typical conditions. The pull tape on the joint itself provides a clean finish when removed after the finish coat.



NOTE: This drawing is supplied solely to assist in the selection and application of product manufactured by Deluxe Building Products. This drawing is generic in nature and should not be used in design or construction without an independent evaluation by a qualified Architect or Engineer of Record.

©2025 Deluxe Building Products. All rights reserved worldwide. Product illustrations are for reference only.
 CA RESIDENTS: Please review Prop 65 by visiting www.P65Warnings.ca.gov

REV 07.19.25.DDXJ