

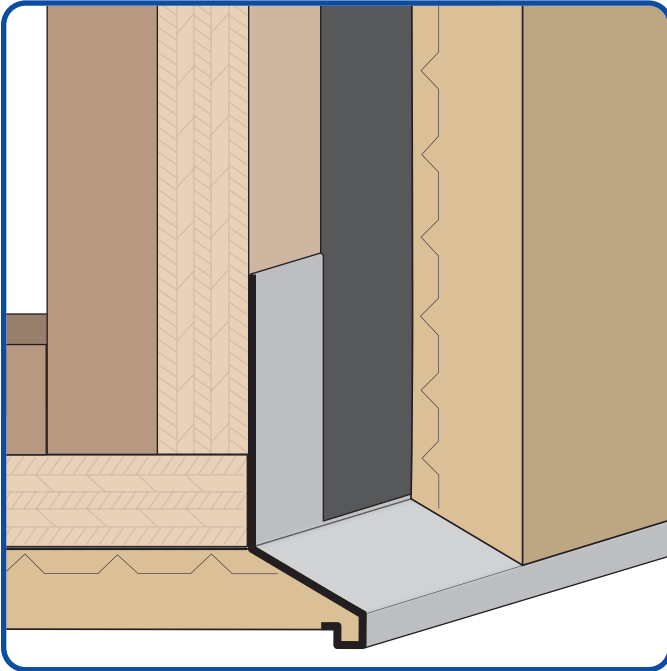


PHONE: (909) 993-5700
EMAIL: sales@deluxebuildingproducts.com
LOCATION: 1350 E. Lexington Ave., Pomona, CA 91766



www.DeluxeBuildingProducts.com

Deluxe Soffit Drip Mold



✓ Available in Aluminum, Copper, Galvanized Steel (G90), Bonderized or Stainless Steel

The Deluxe Soffit Drip Mold is designed to be used as a drip molding at fascia, soffit transition or at recessed window conditions to provide a decorative plaster stop and drip edge.

AVAILABLE DIMENSIONS

X Sizes: 7/8" or 1-3/8" *Custom Sizes Upon Request*

Y Sizes: 3-1/2"

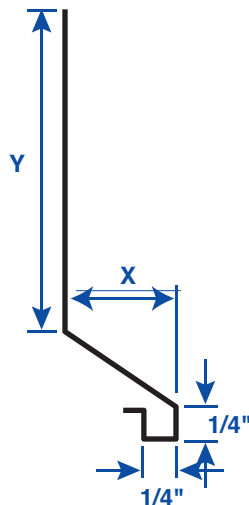
Length: 120"

Available Materials:

Aluminum, Bonderized, Copper, Galvanized Steel or Stainless Steel

ASTM Codes:

All Accessories are fabricated from prime galvanized steel G90 zinc coating by the hot dipped method, conforming to steel and coating specification ASTM A-653/A-653M or zinc alloy meeting ASTM B-69.



GET A QUOTE

Company: _____

Name: _____

Address: _____

City: _____

State: _____

ZIP: _____

Phone: _____

Email: _____

Quantity: _____

Material: _____

X Size: _____

Y Size: _____

Length: _____

Notes: _____



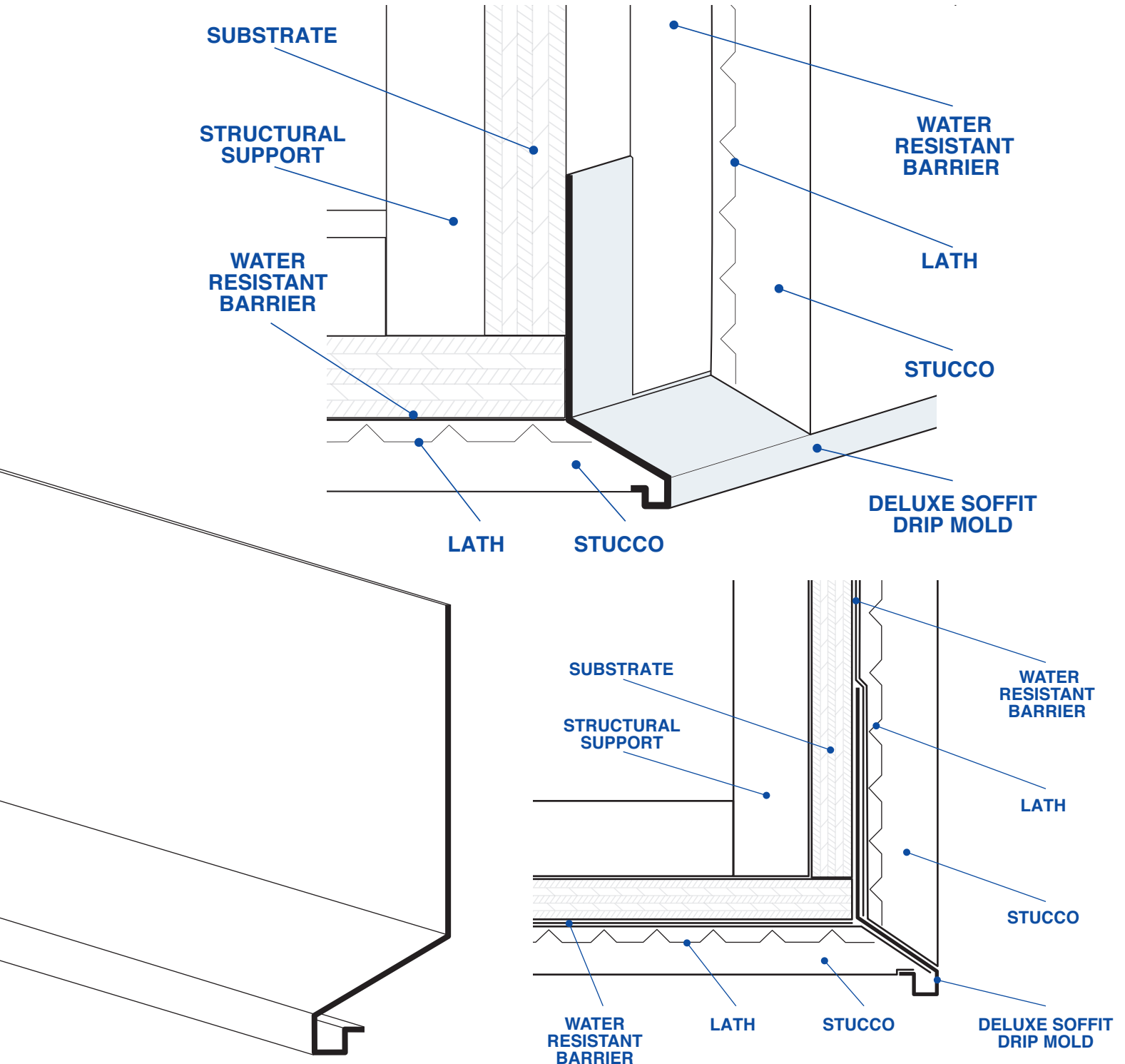
PHONE: (909) 993-5700
 EMAIL: sales@deluxebuildingproducts.com
 LOCATION: 1350 E. Lexington Ave., Pomona, CA 91766



www.DeluxeBuildingProducts.com

Deluxe Soffit Drip Mold

The Deluxe Soffit Drip Mold is designed to be used as a drip molding at fascia, soffit transition or at recessed window conditions to provide a decorative plaster stop and drip edge.



NOTE: This drawing is supplied solely to assist in the selection and application of product manufactured by Deluxe Building Products. This drawing is generic in nature and should not be used in design or construction without an independent evaluation by a qualified Architect or Engineer of Record.

©2025 Deluxe Building Products. All rights reserved worldwide. Product illustrations are for reference only.
 CA RESIDENTS: Please review Prop 65 by visiting www.P65Warnings.ca.gov

REV 07.19.25.DSDM